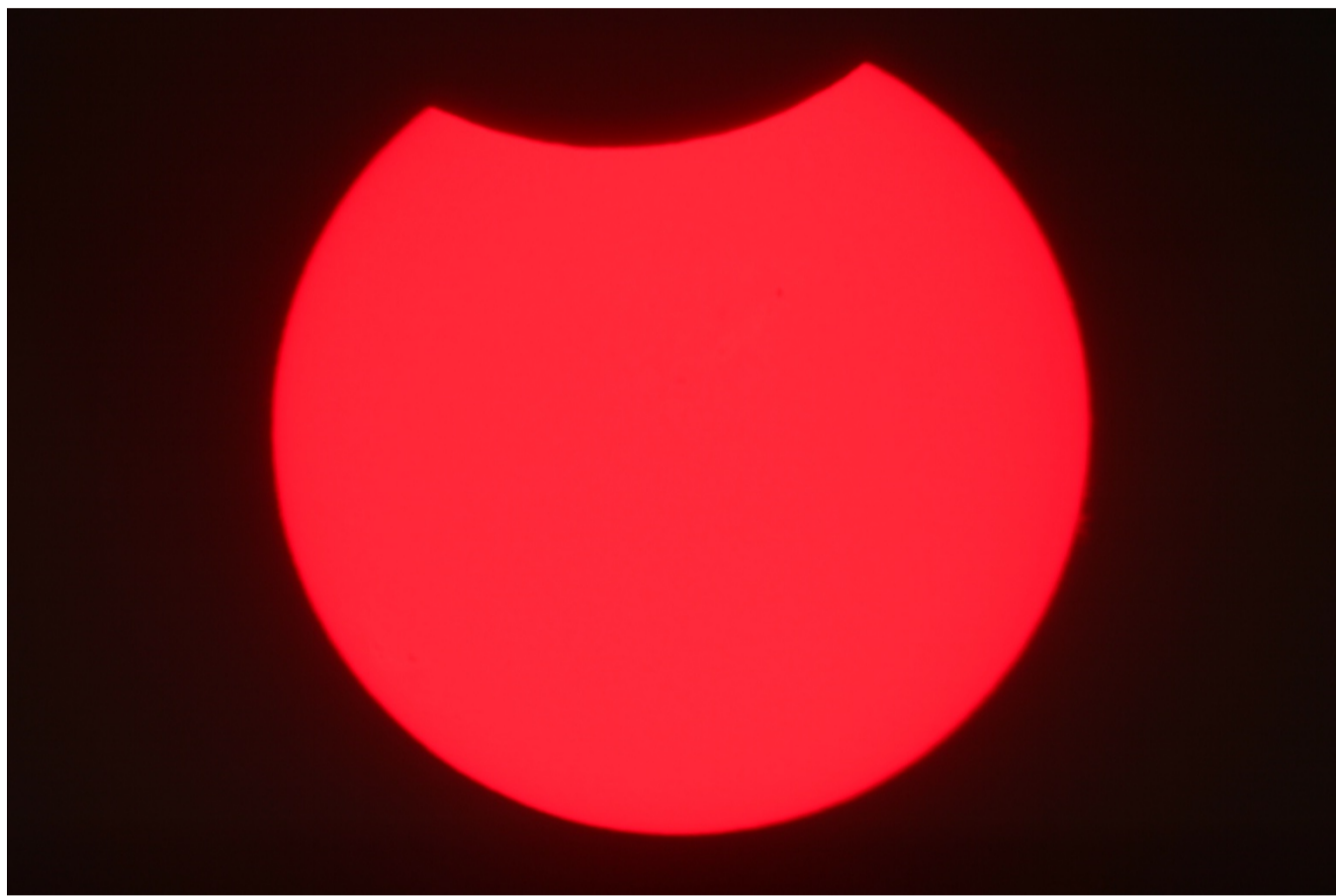
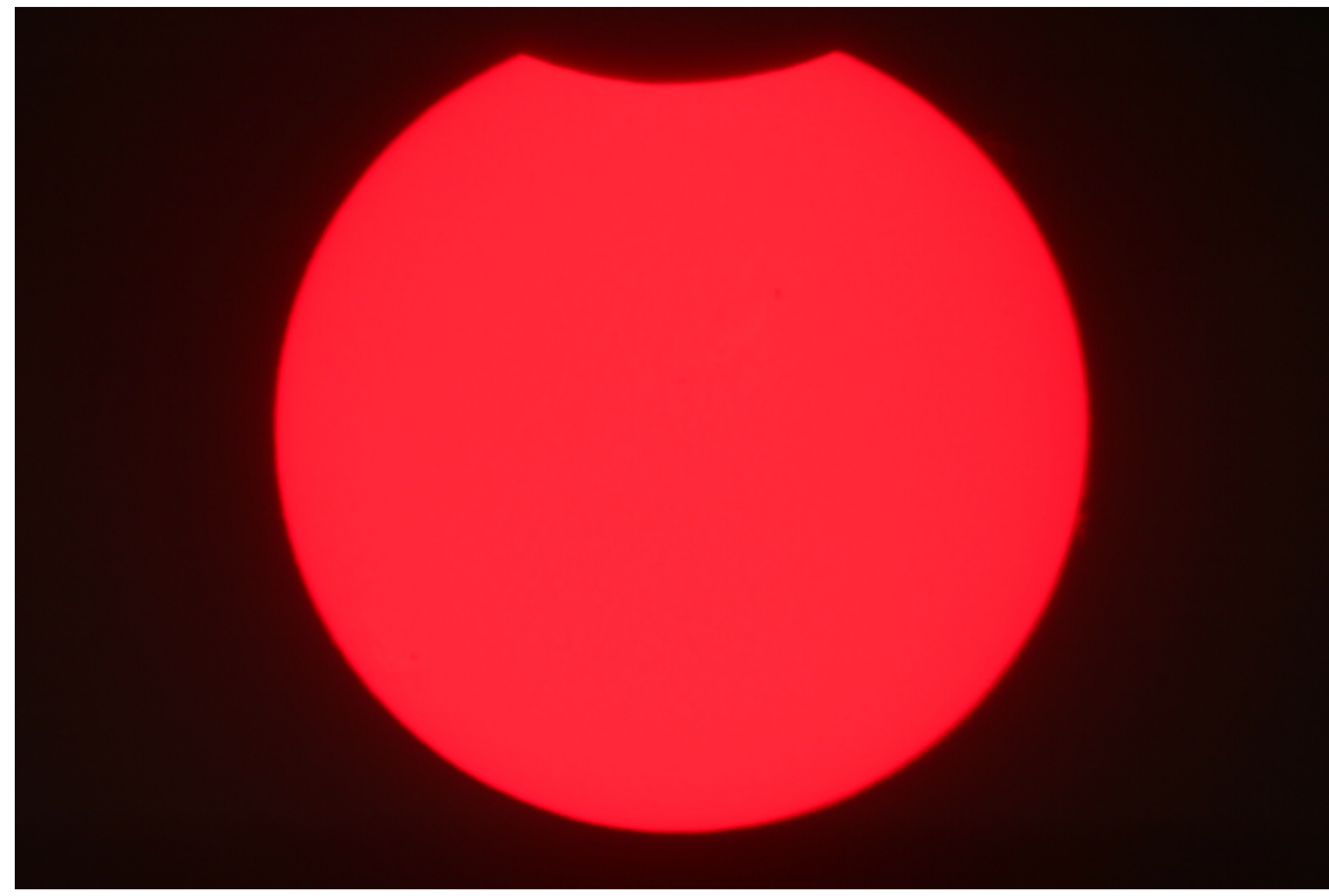
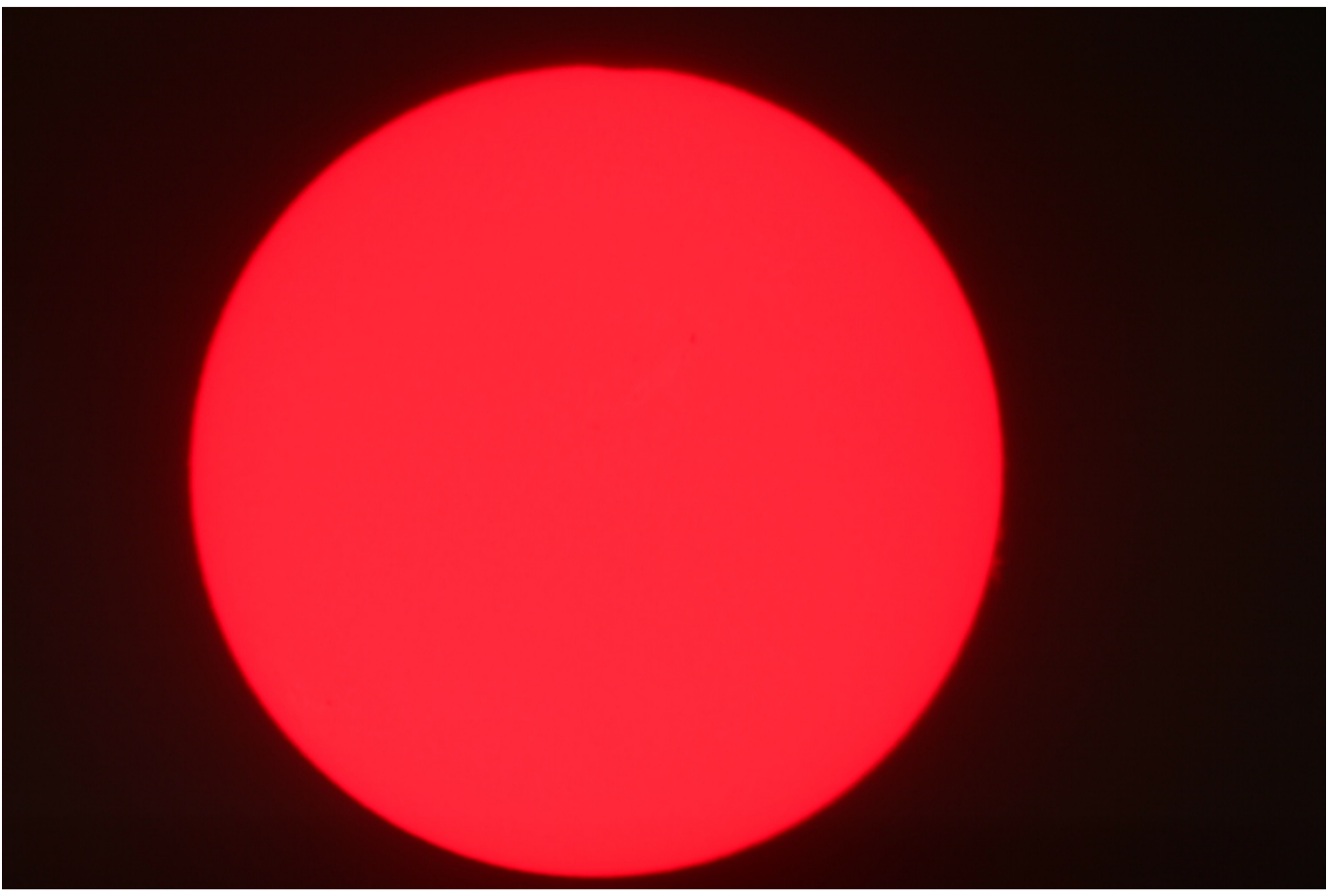
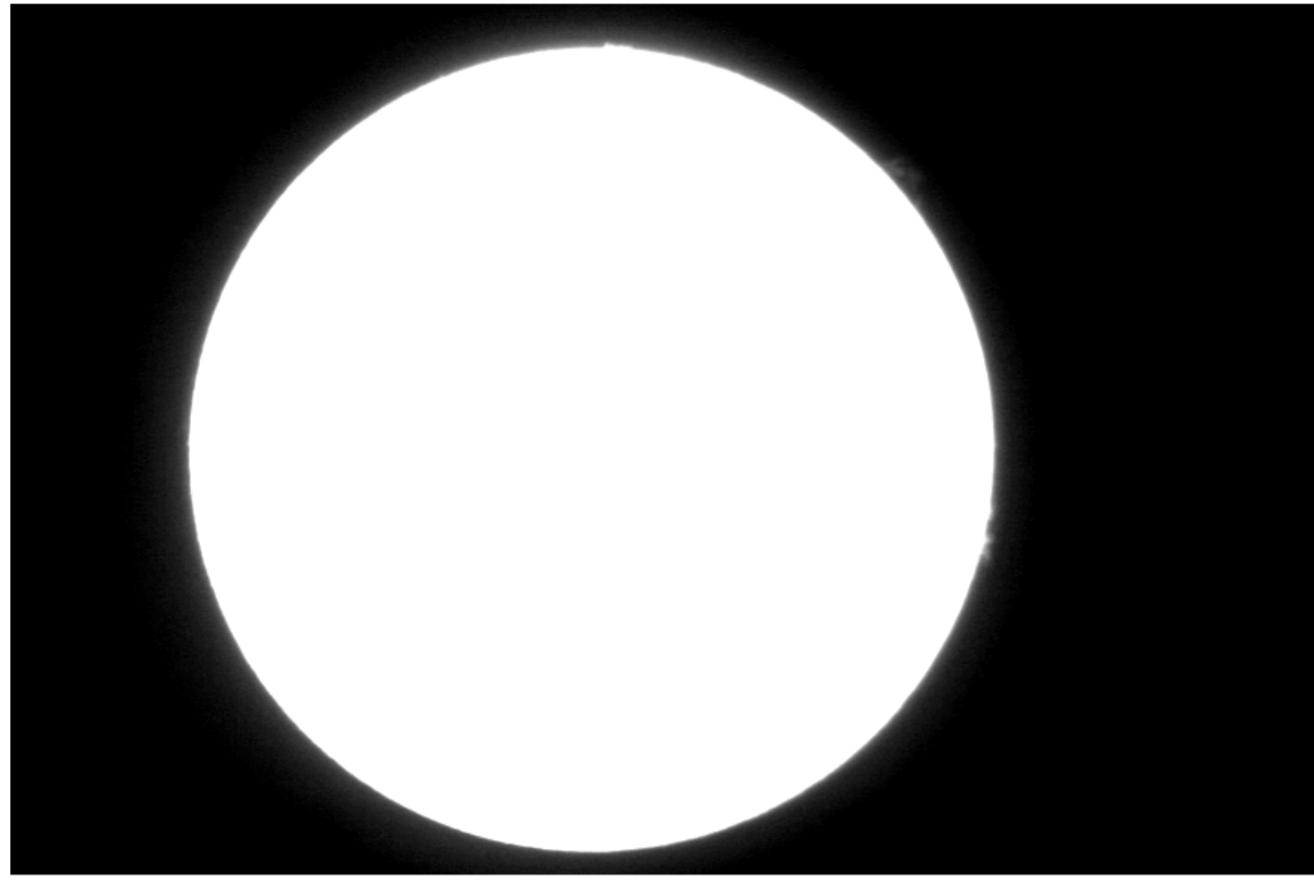


Eclipse parcial de sol del 21 de agosto de 2017 desde Tonantzintla

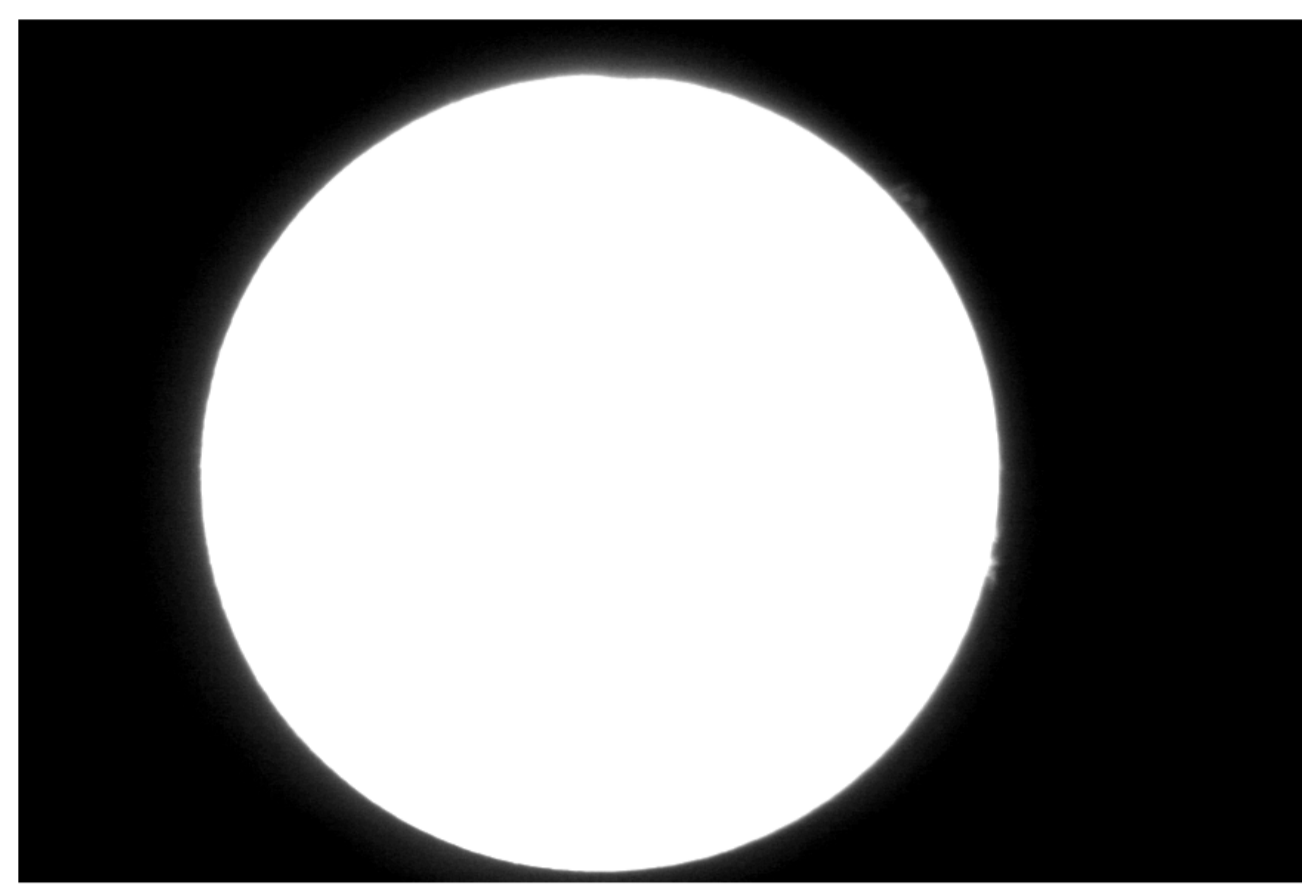


# Eclipse parcial de sol 21 de agosto de 2017

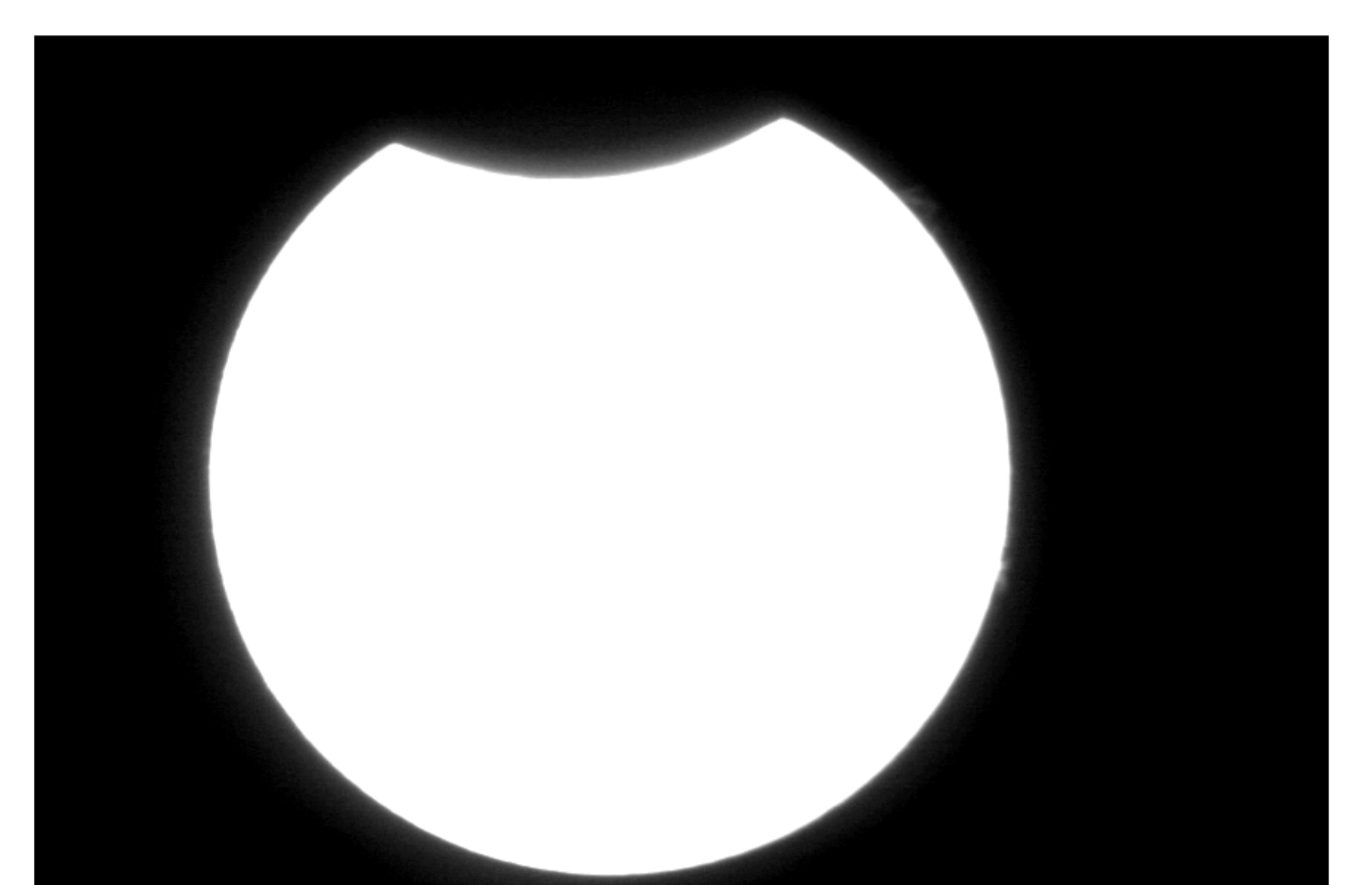
Imágenes tomadas con el telescopio para la observación del sol del INAOE a una longitud de onda de 656.28 nm. Velocidad de obturación 1/60 s. Hora local. Imágenes procesadas digitalmente.



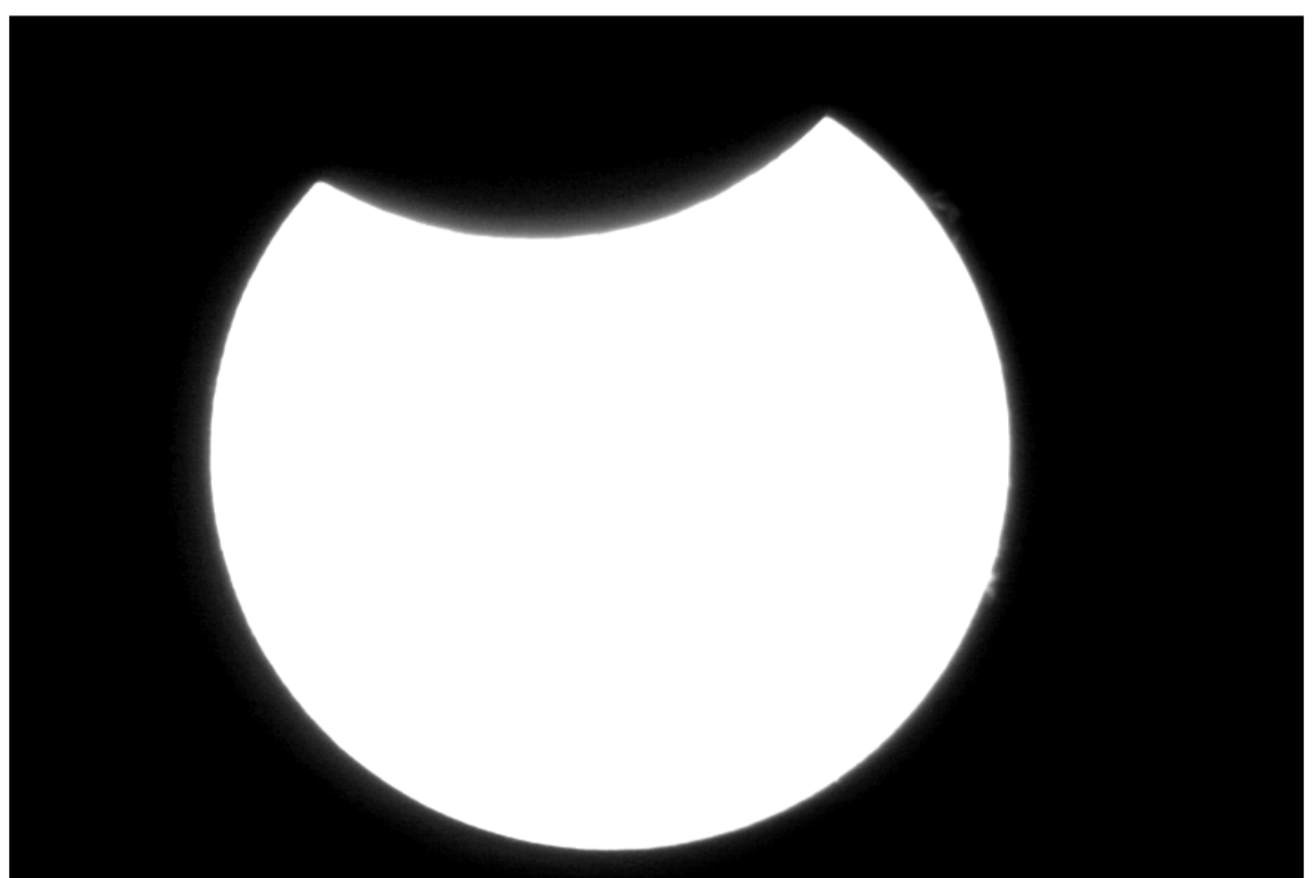
12:00



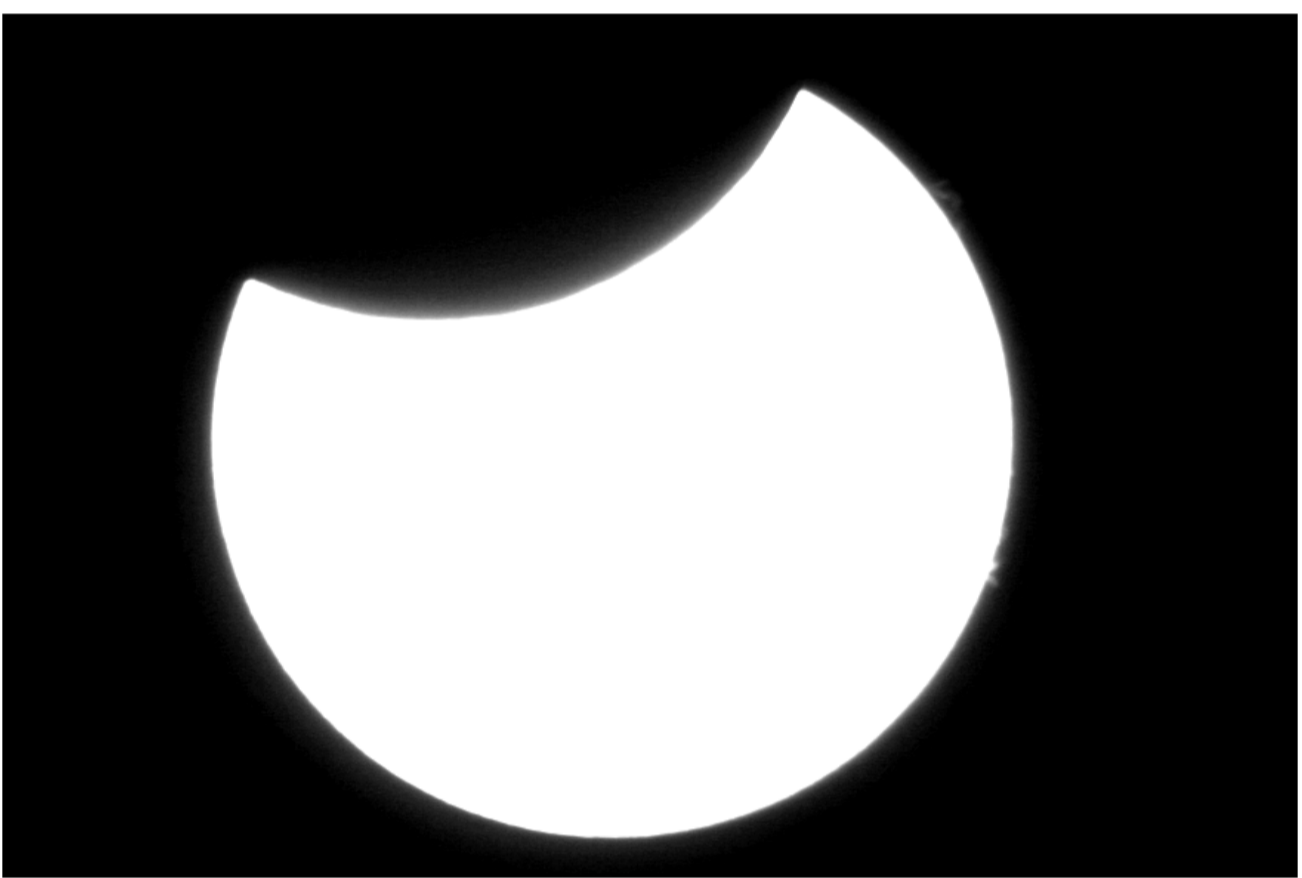
12:04



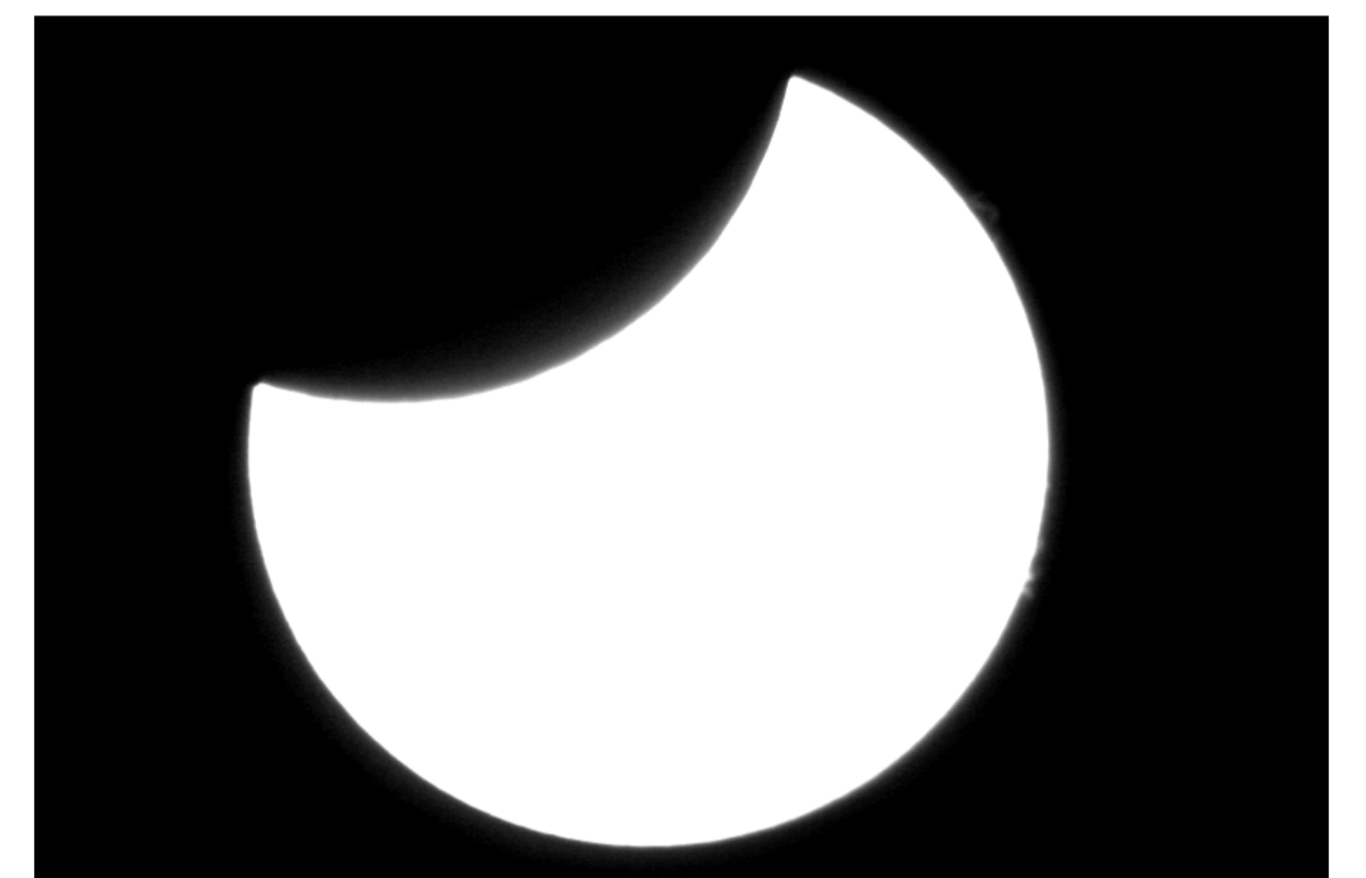
12:20



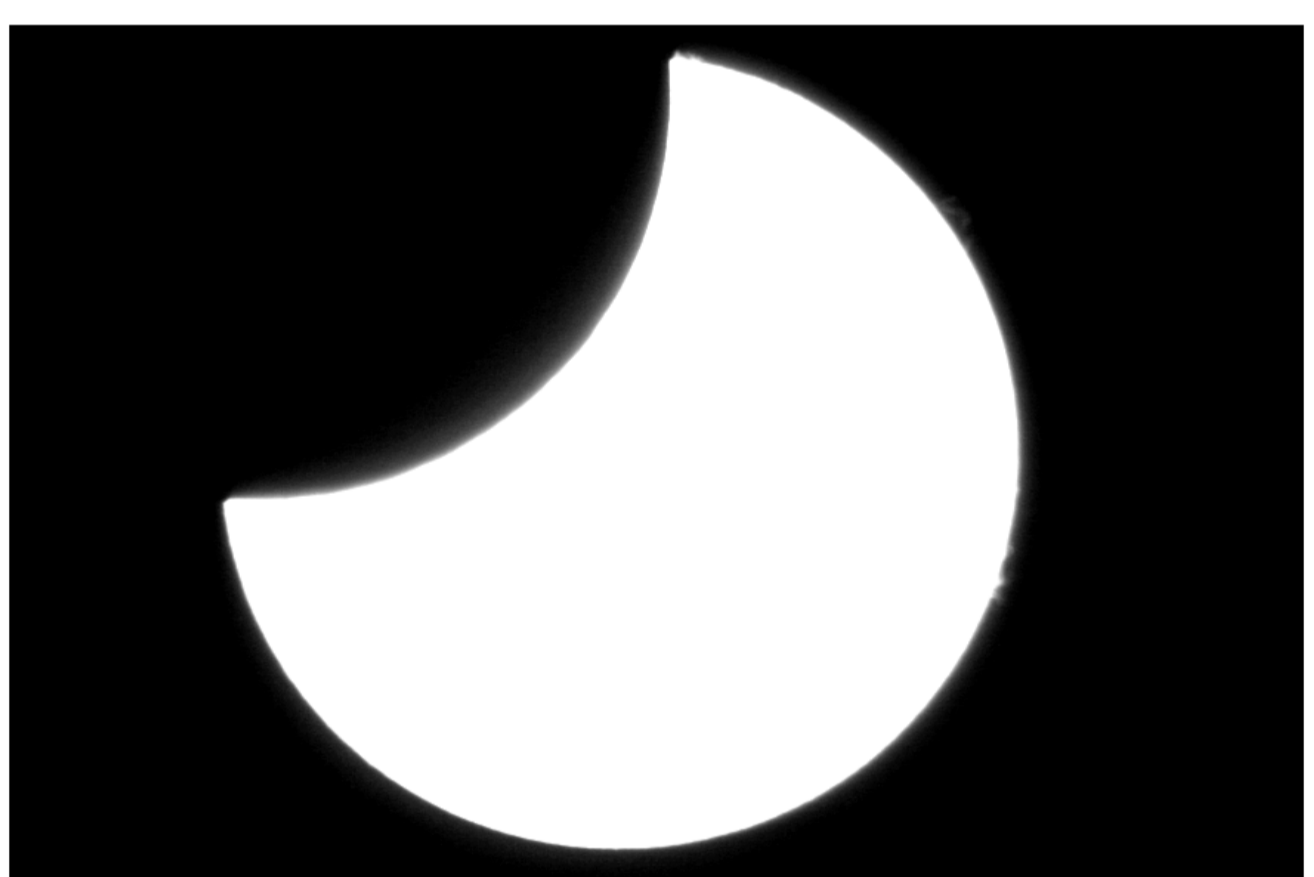
12:36



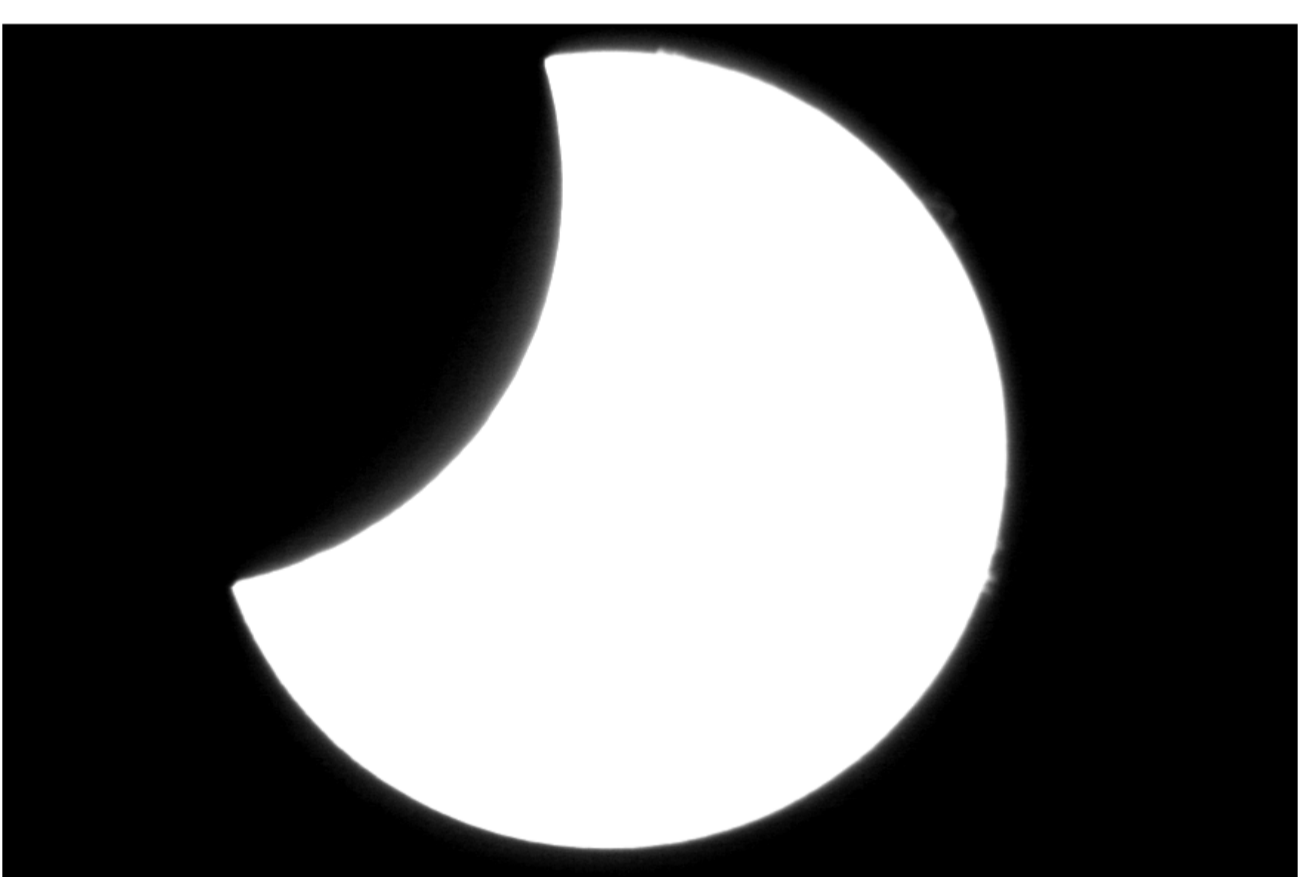
12:52



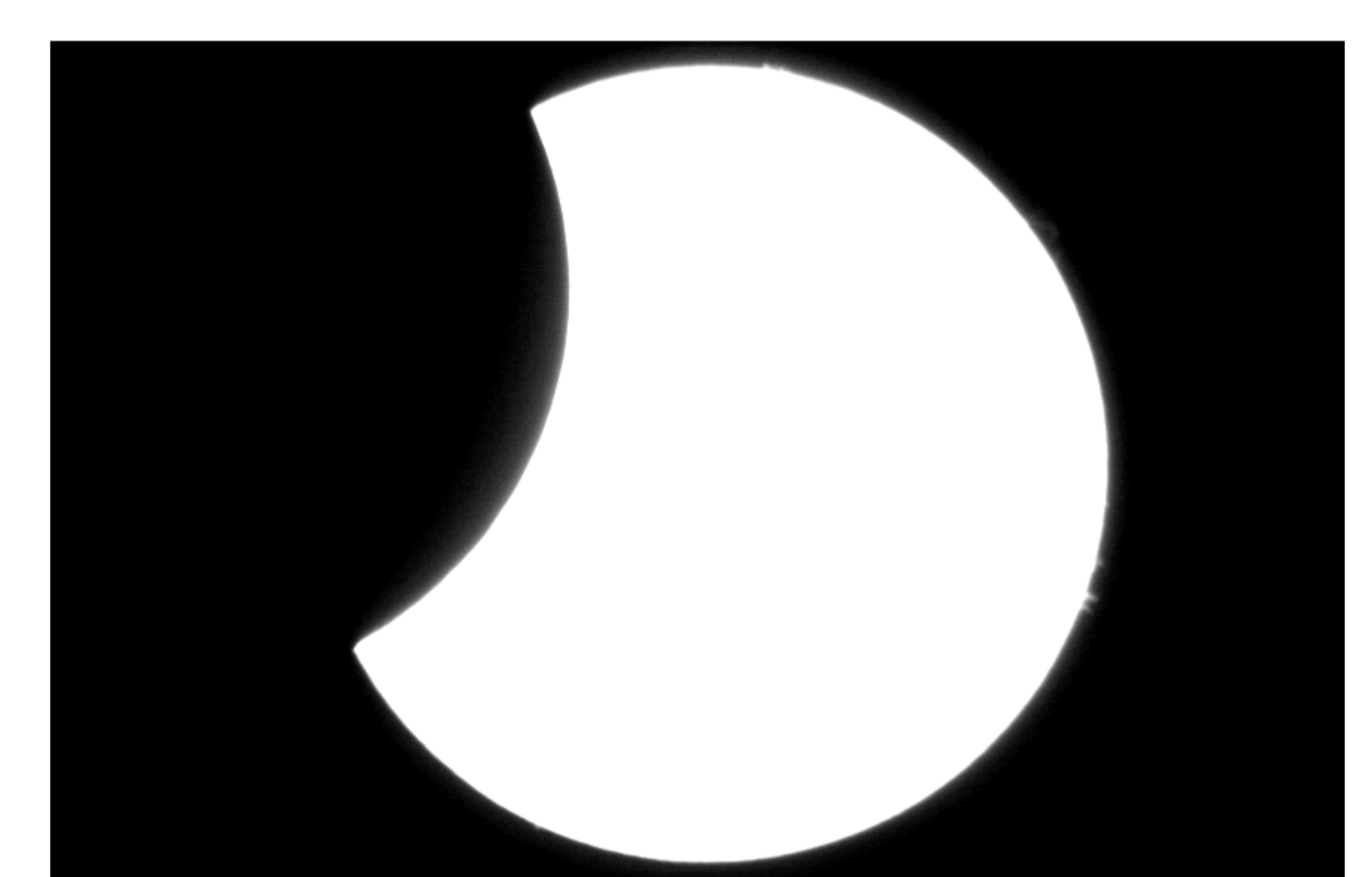
13:08



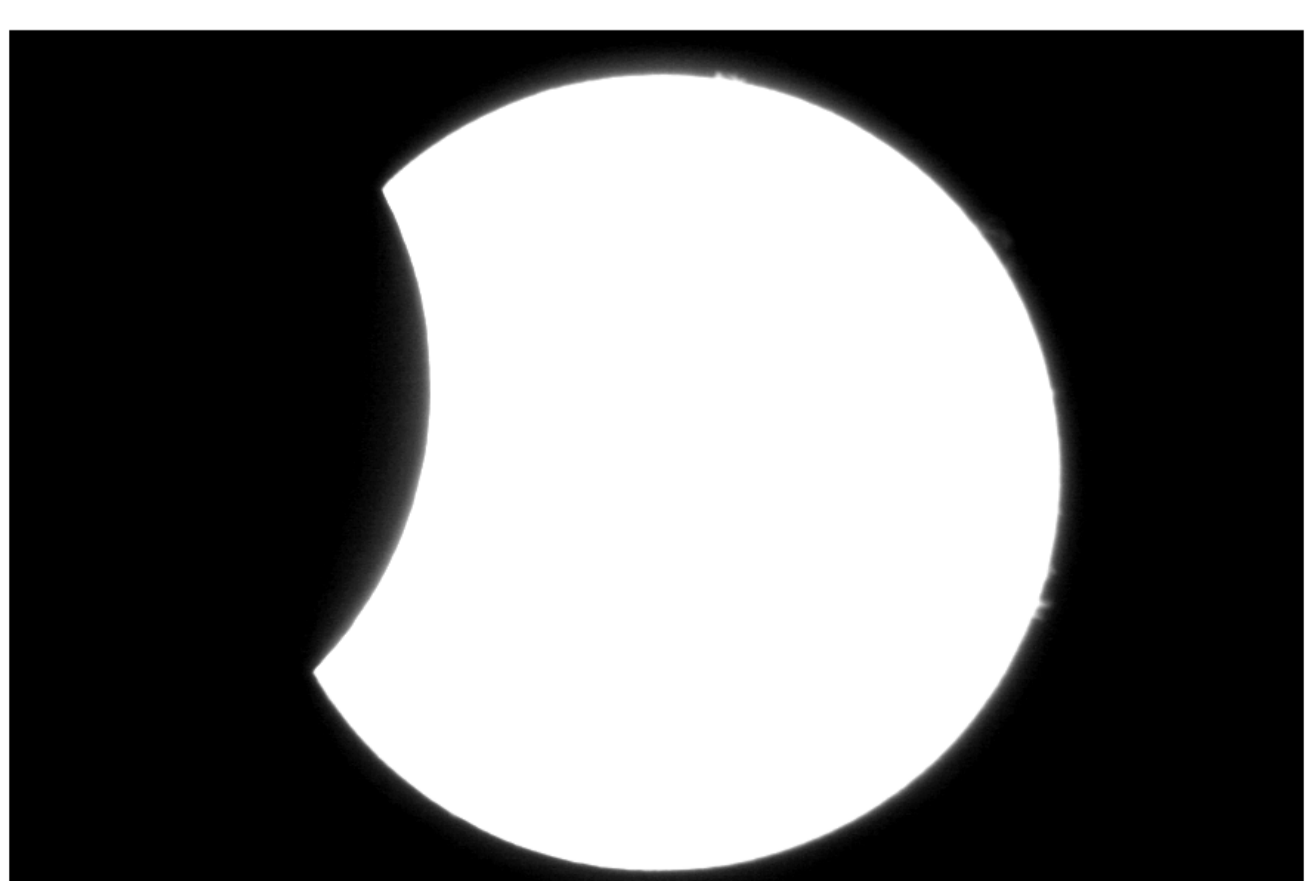
13:24



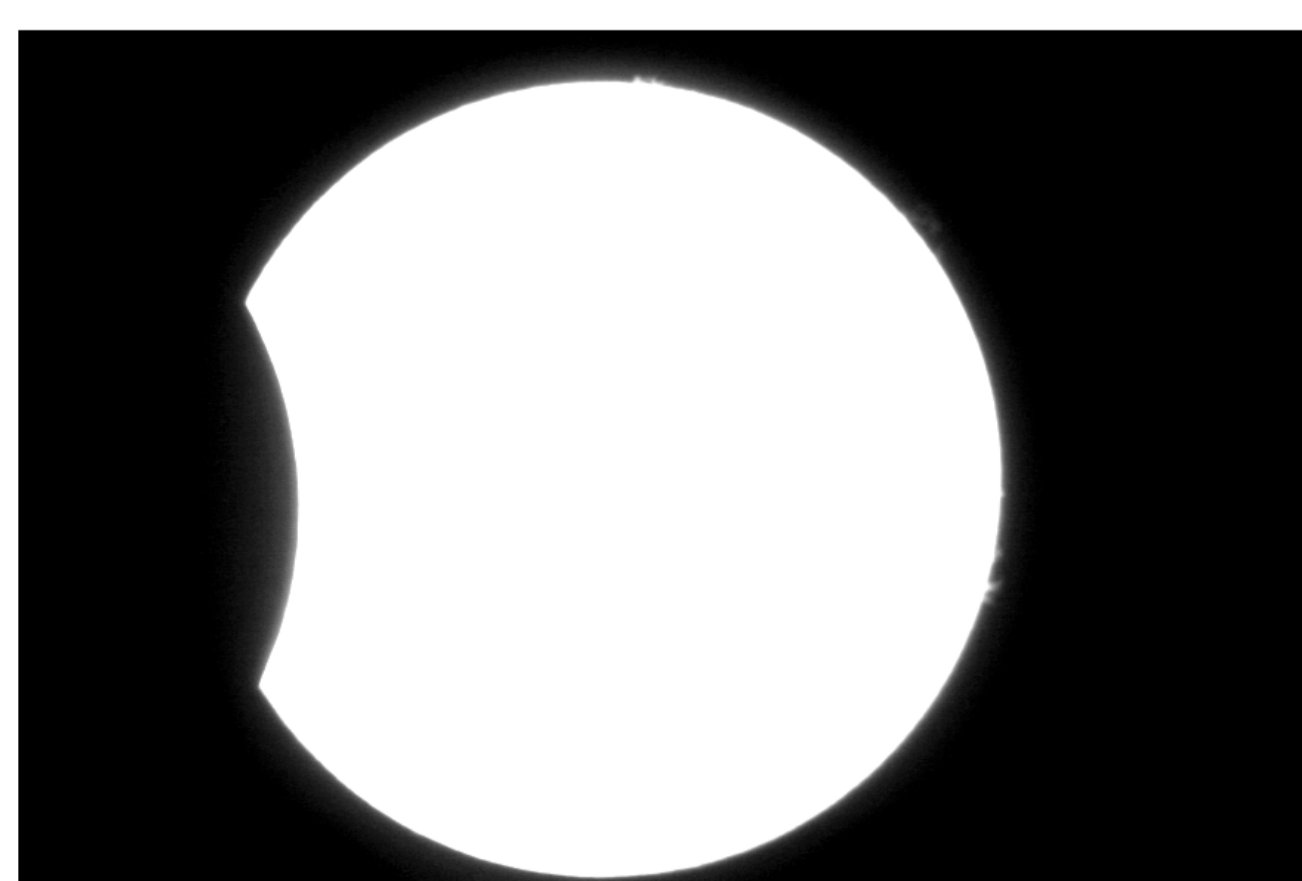
13:40



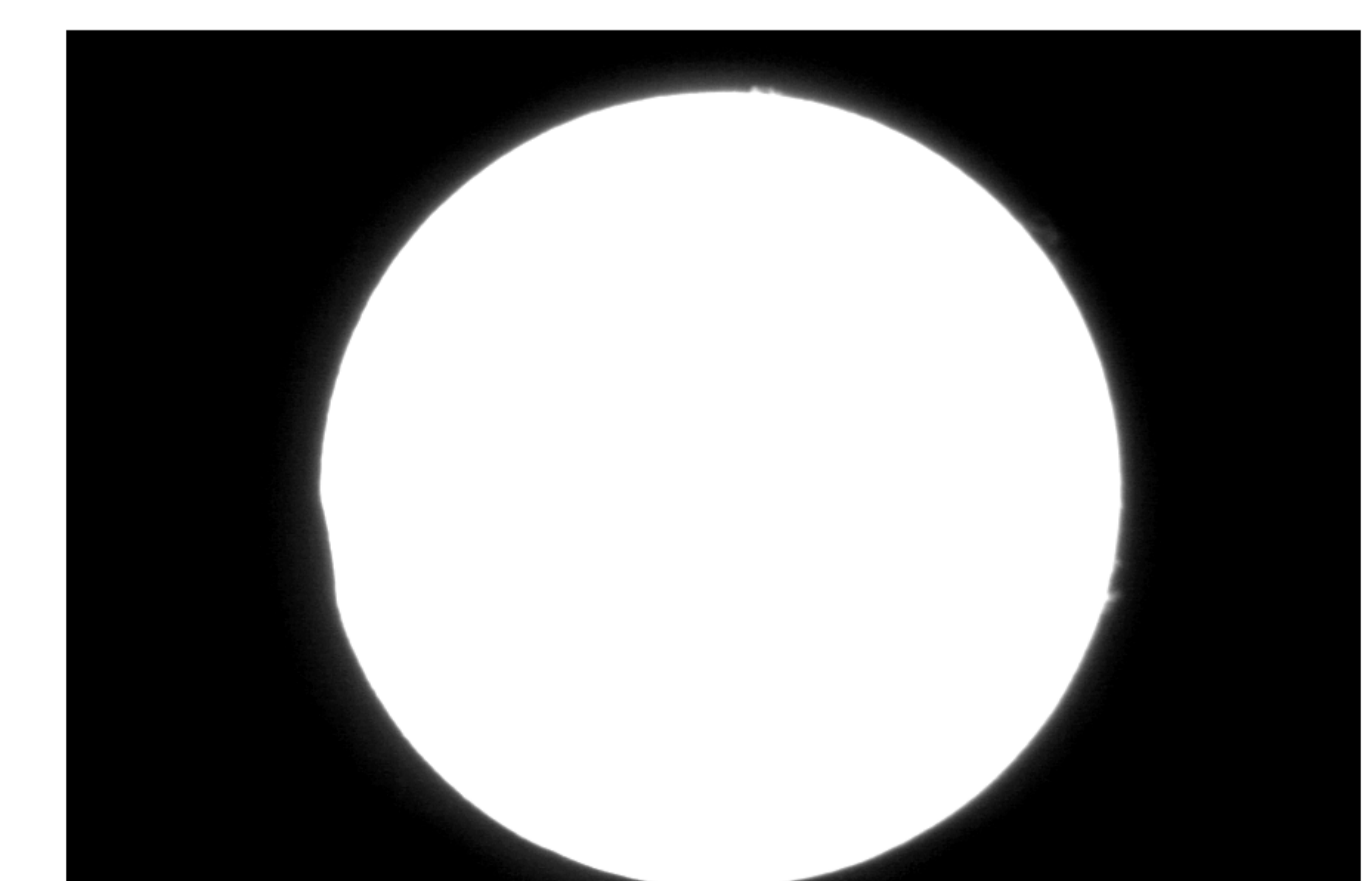
13:56



14:12



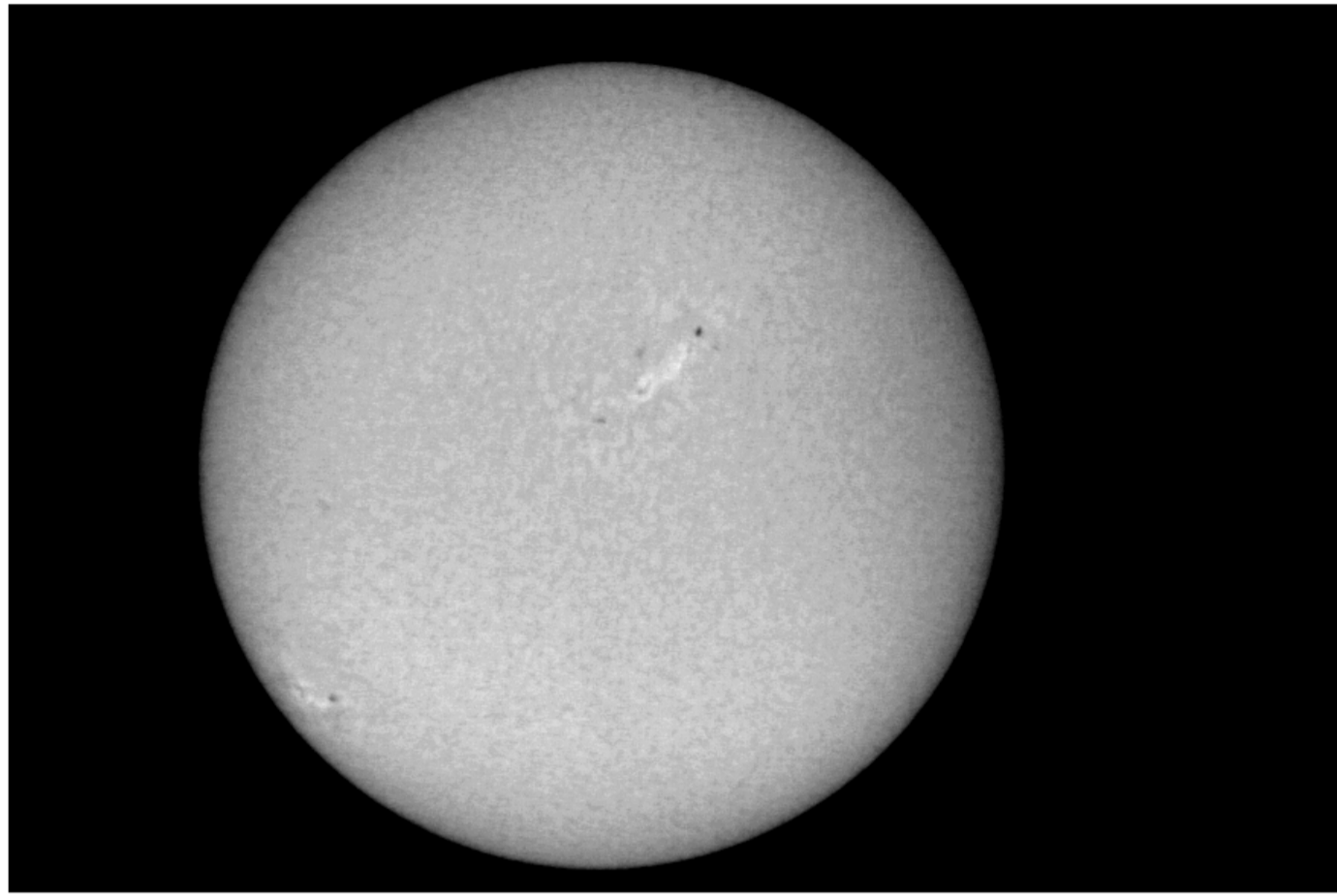
14:28



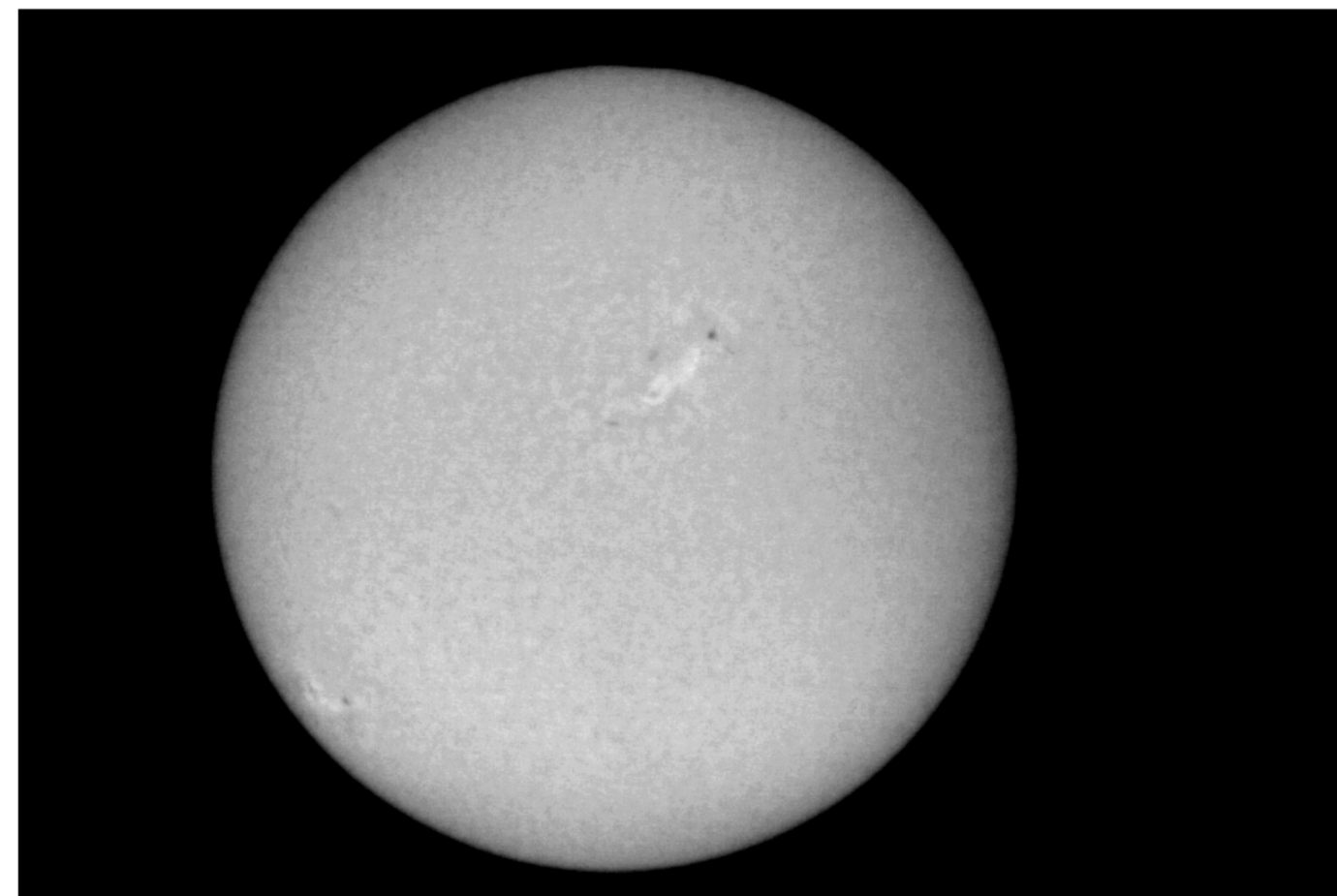
14:40

# Eclipse parcial de sol 21 de agosto de 2017

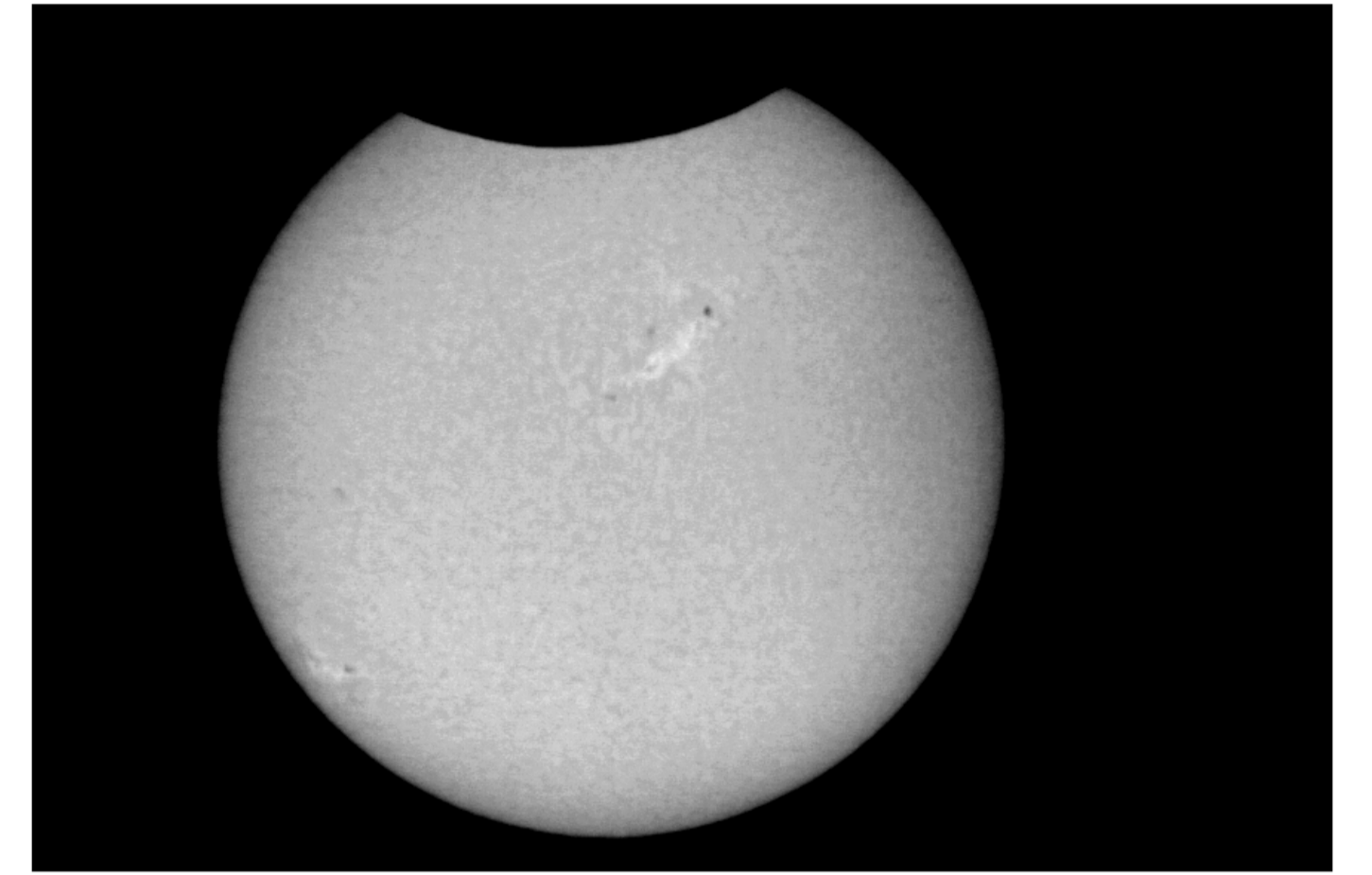
Imágenes tomadas con el telescopio para la observación del sol del INAOE a una longitud de onda de 656.28 nm. Velocidad de obturación 1/1000 s. Hora local. Imágenes procesadas digitalmente.



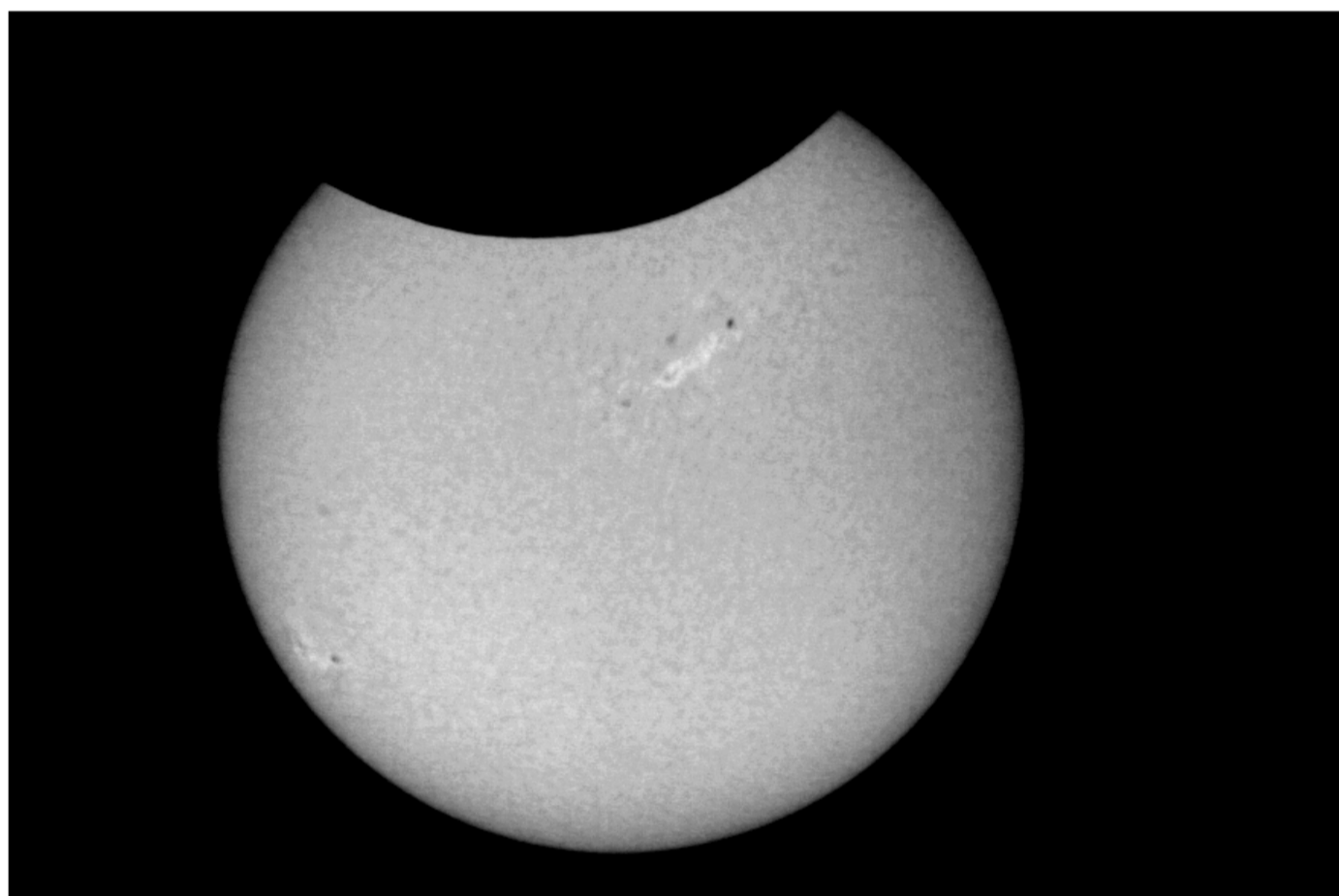
12:00



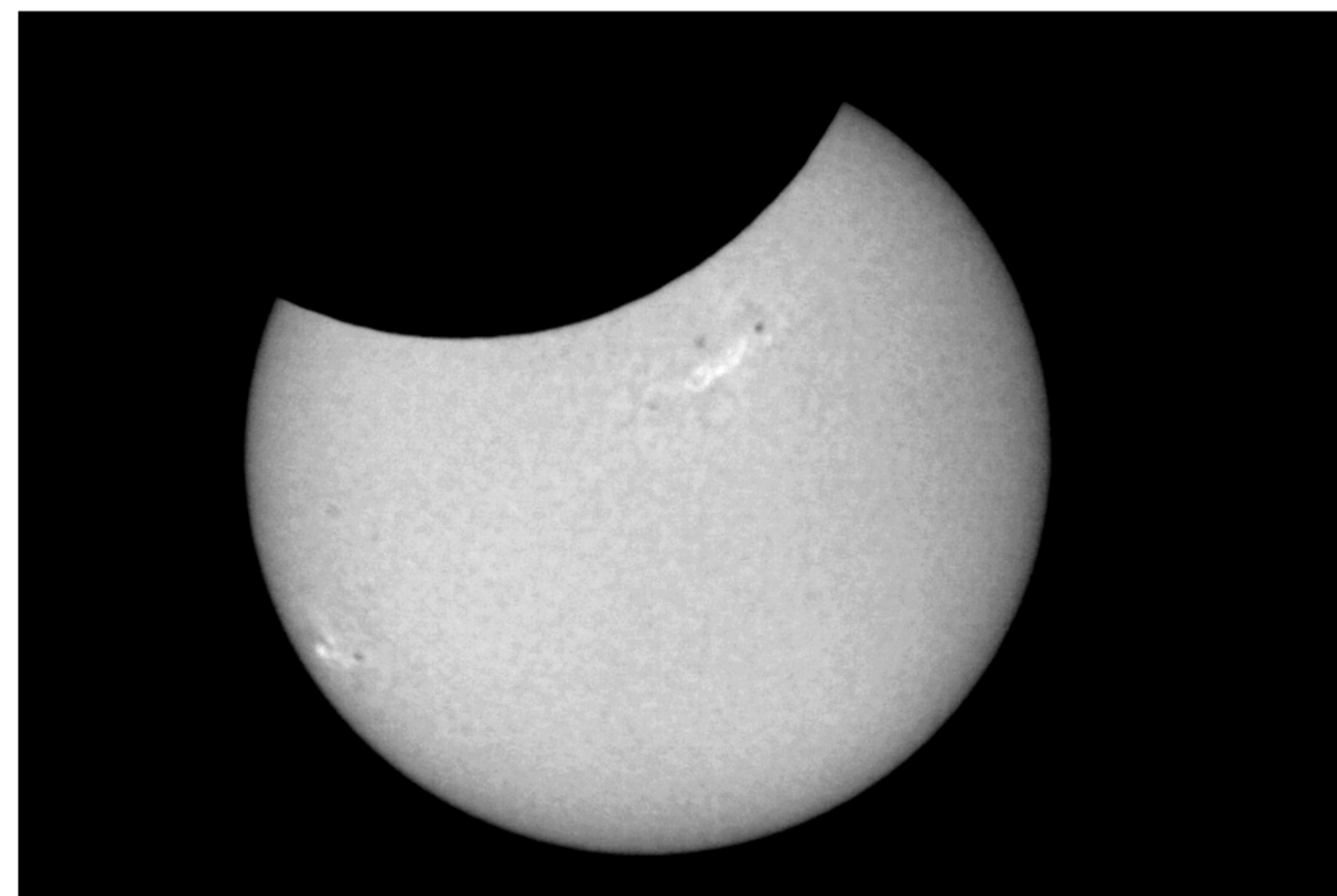
12:04



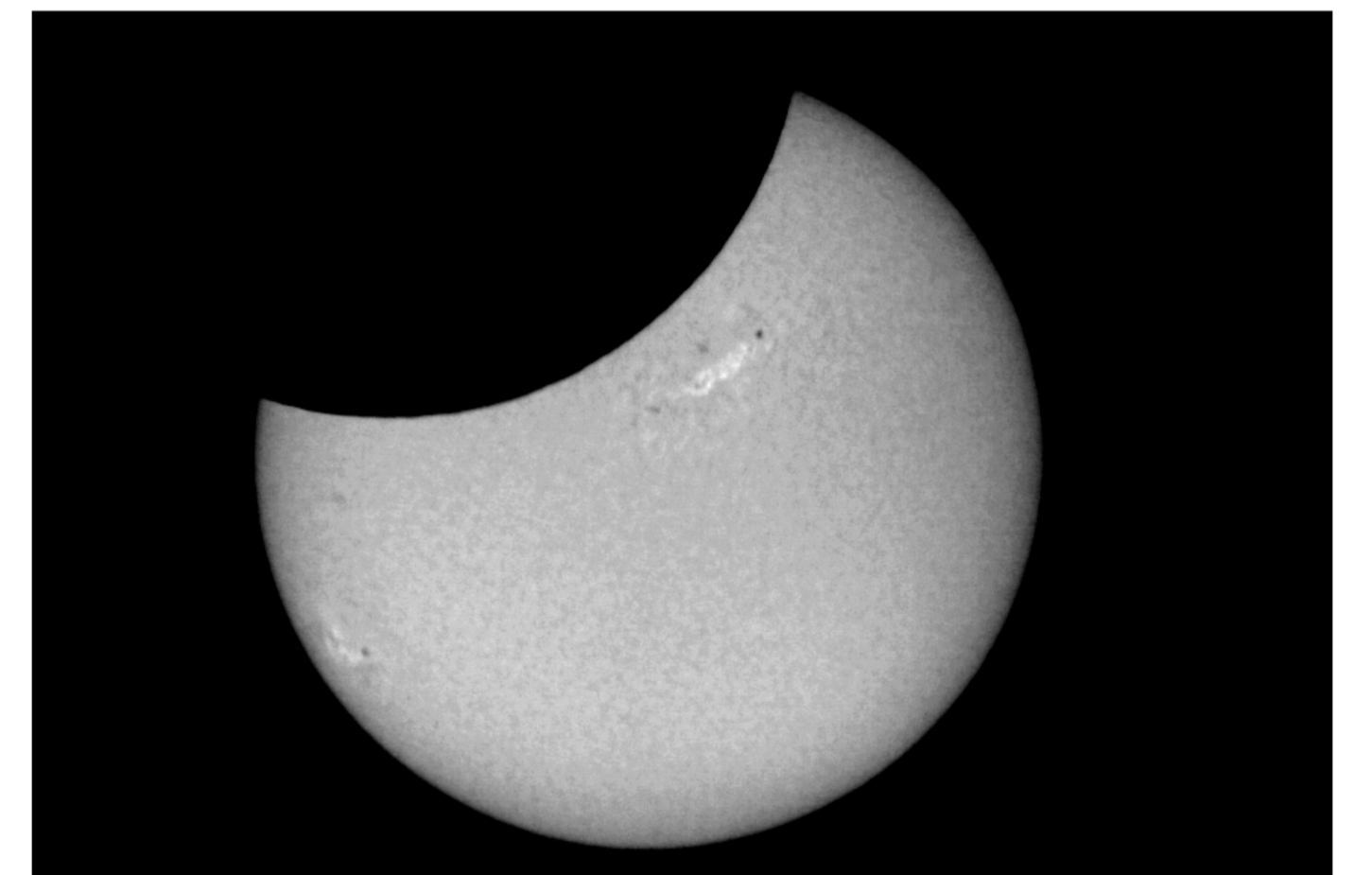
12:20



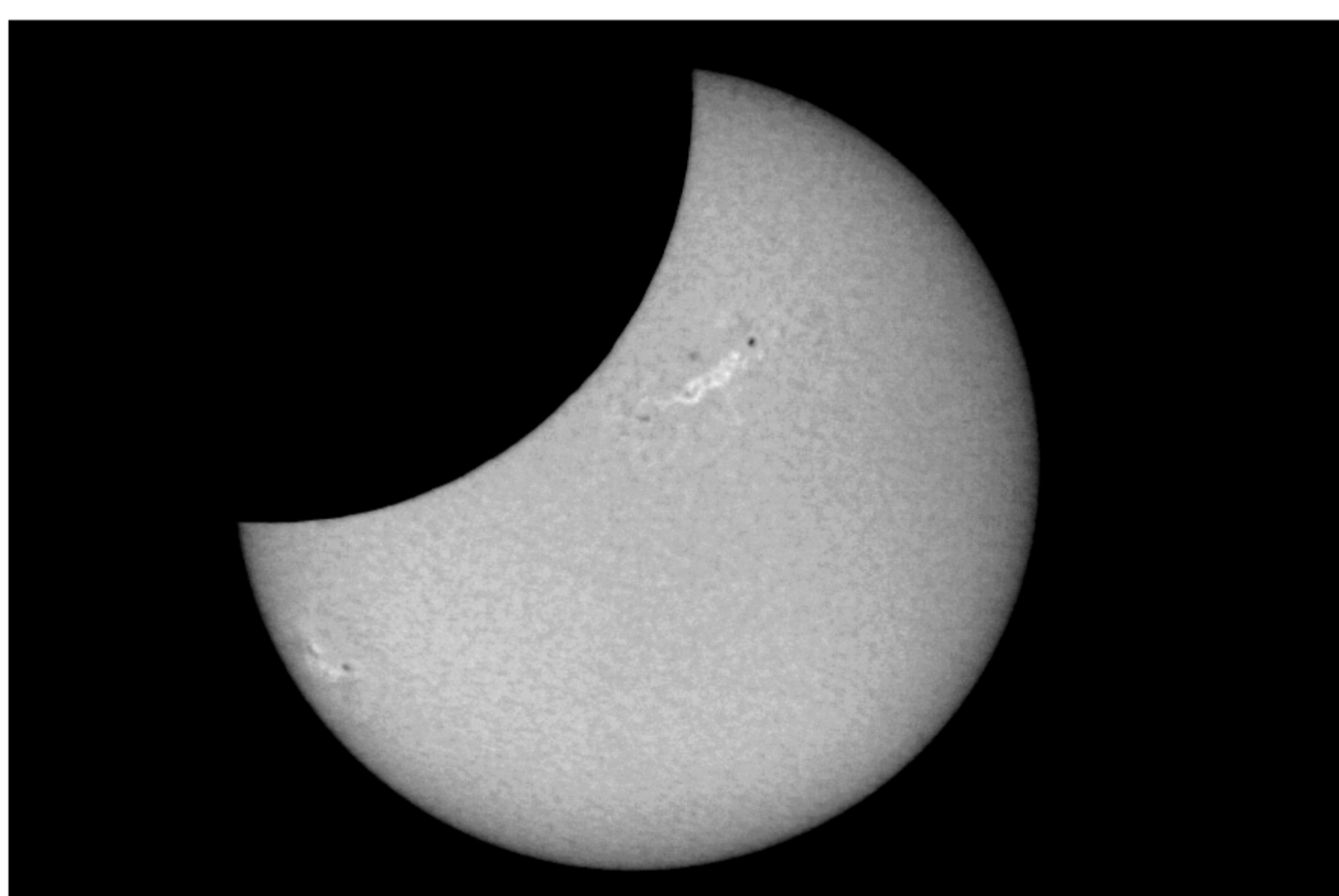
12:36



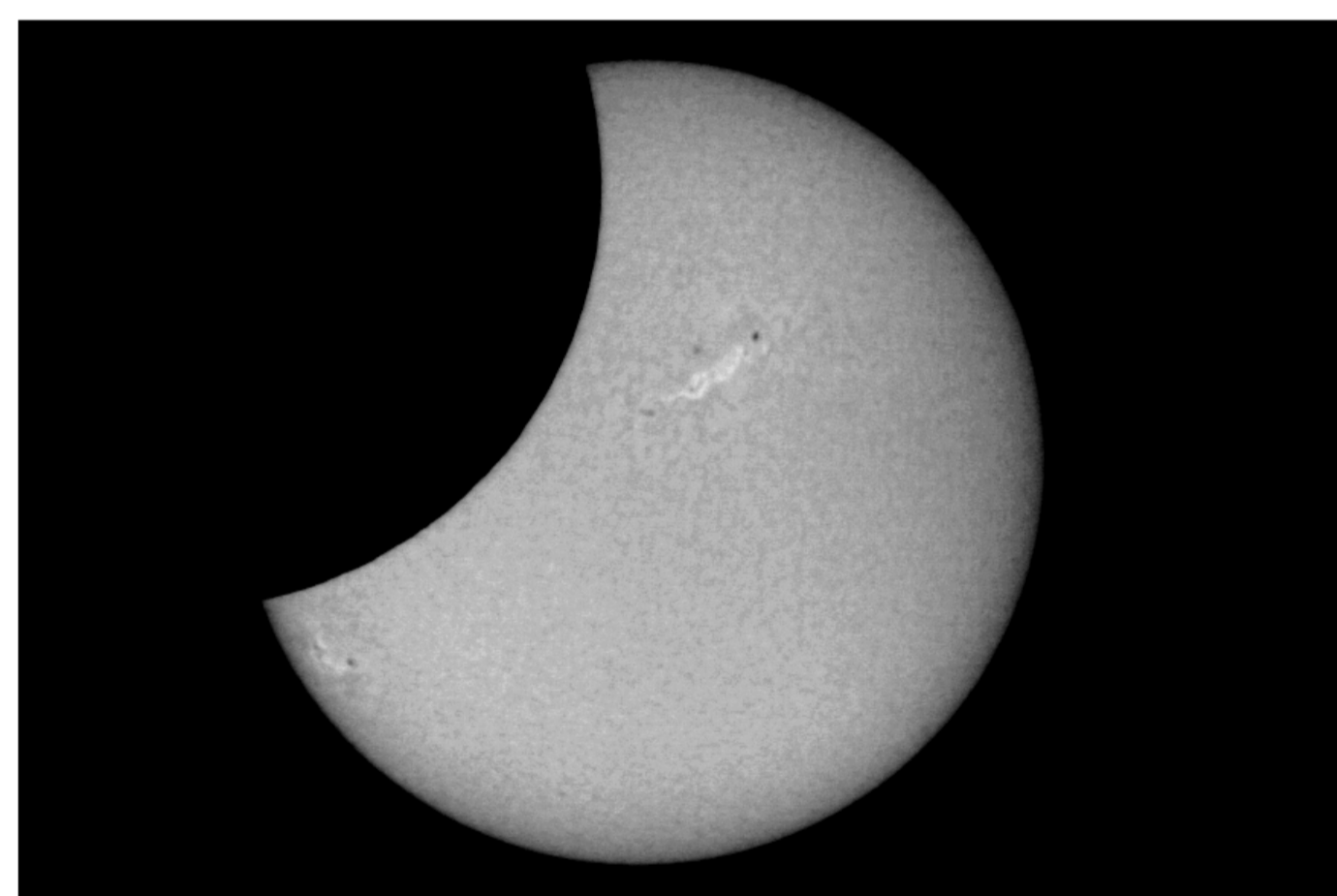
12:52



13:08



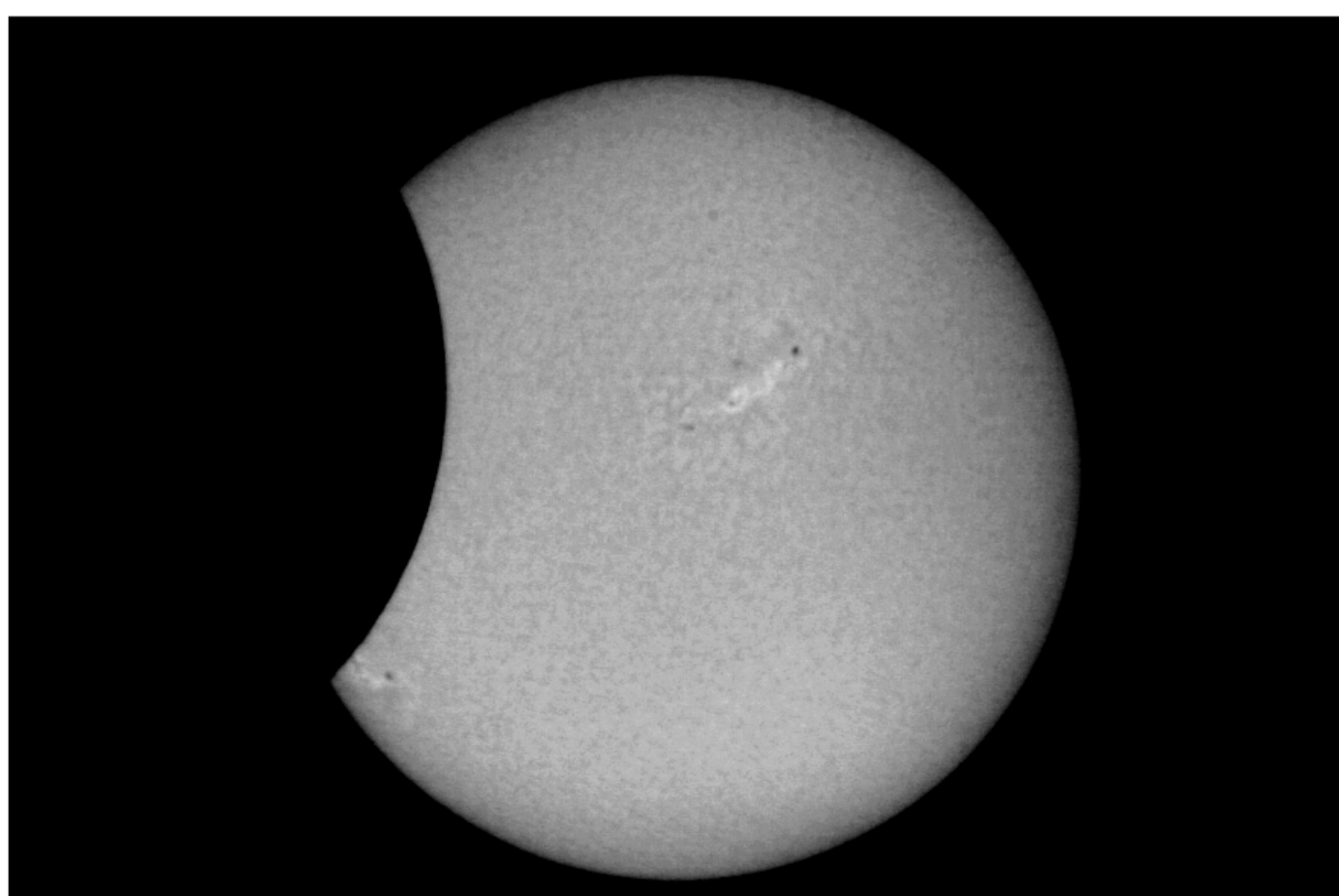
13:24



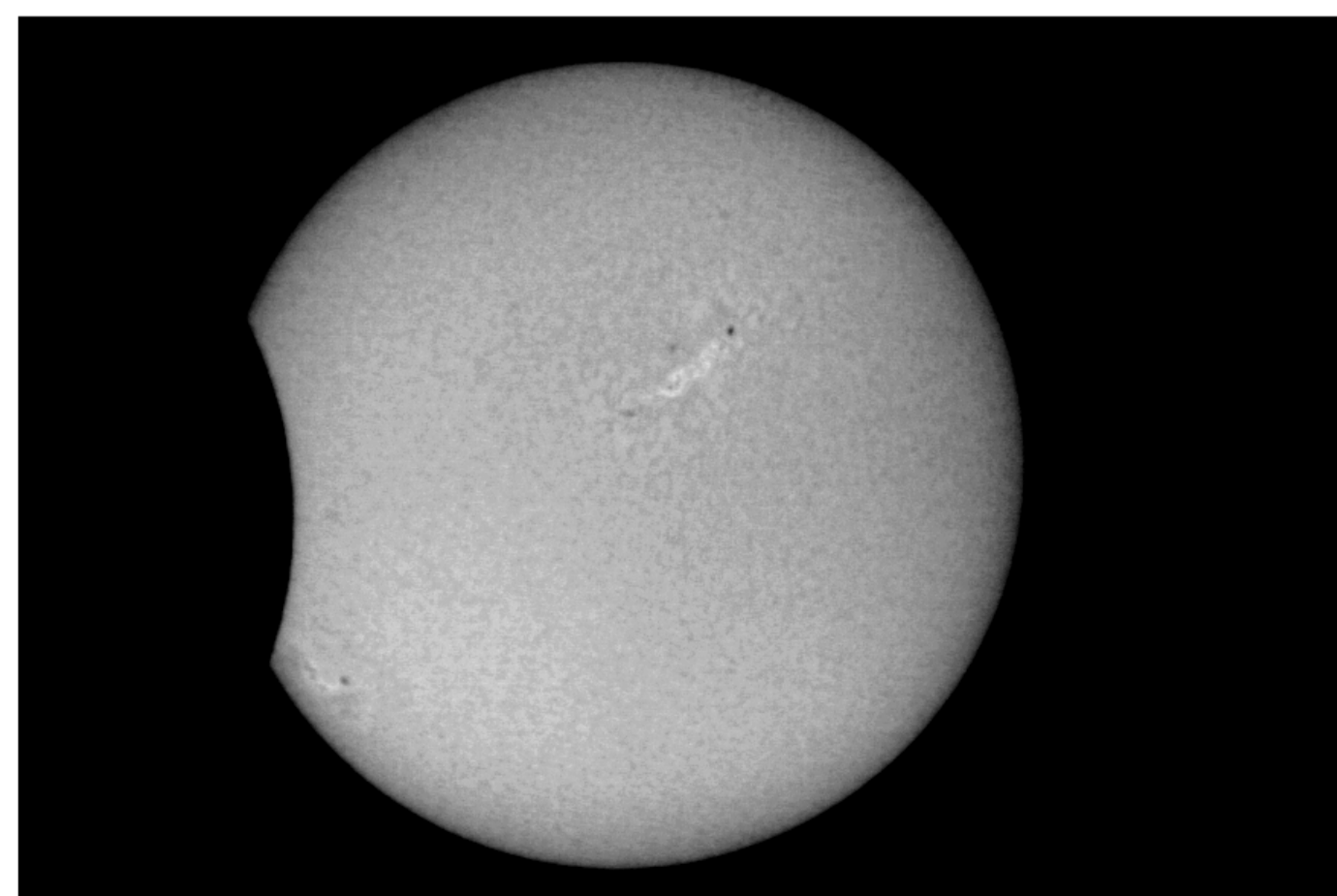
13:40



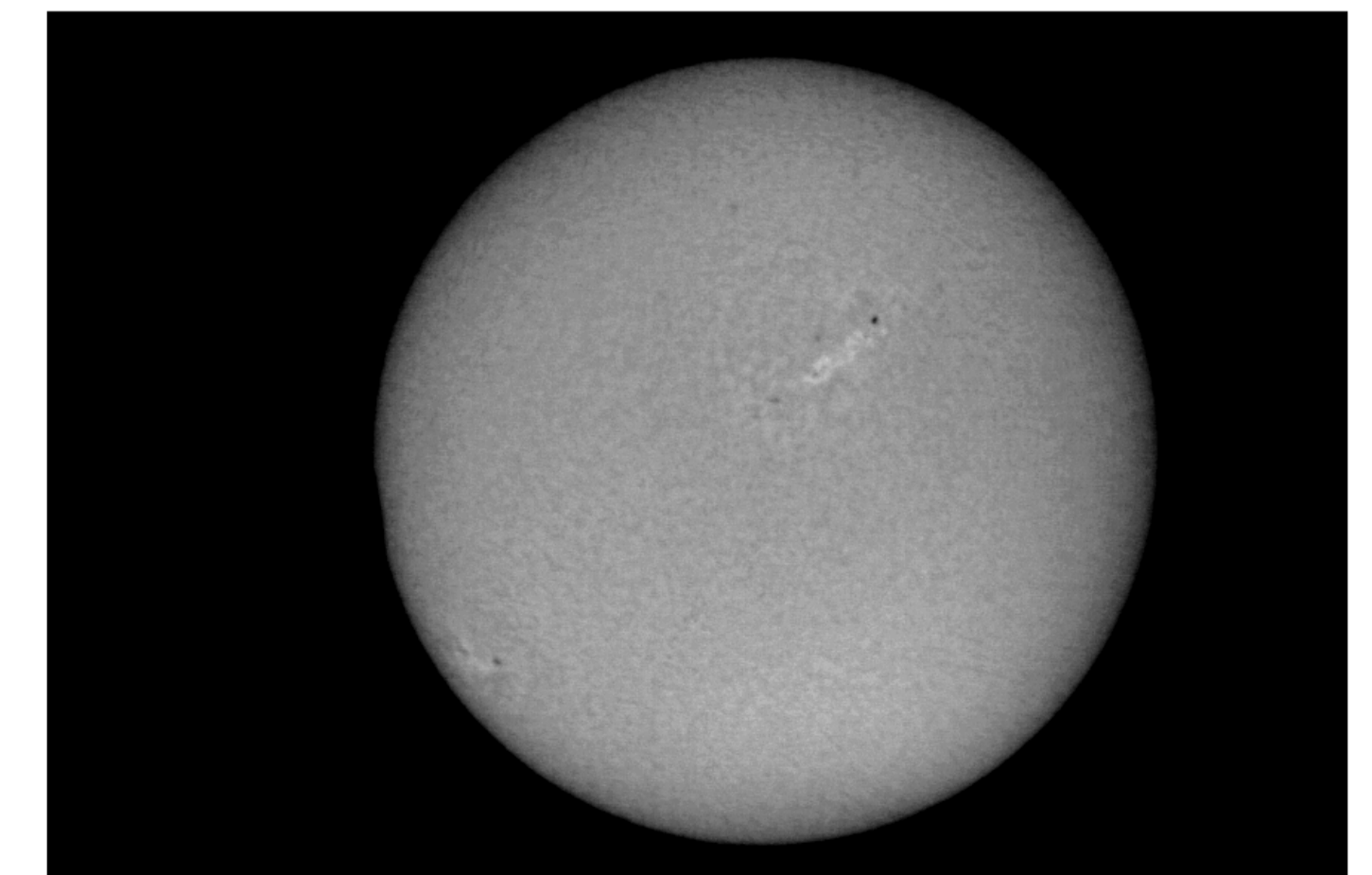
13:56



14:12



14:28



14:40